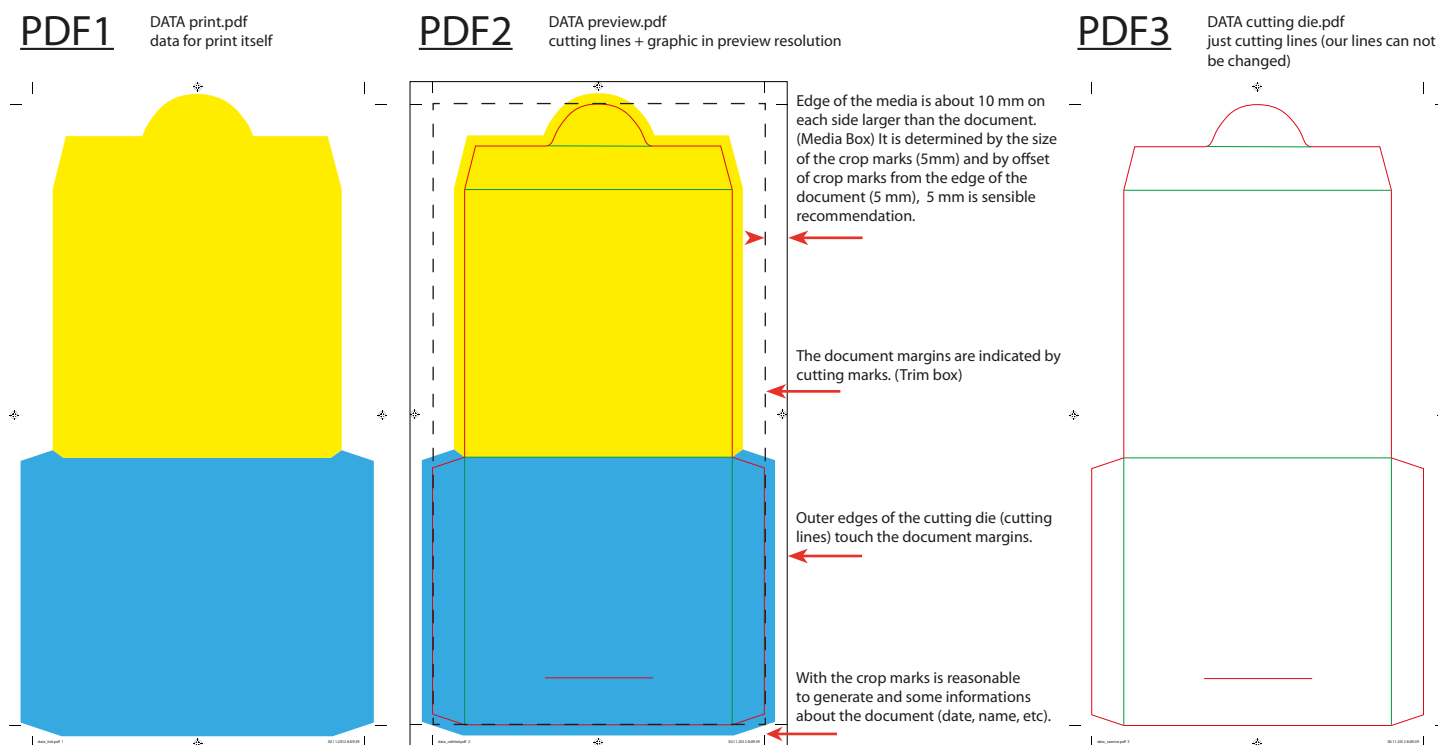


These requirements focus mainly on preparing data for subsequent cutting, because most errors occur in this phase. Most of the other informations is standard and should be generally known.

**Primarily we request and recommend following way how to prepare data.** (Because of the safest, simple and faster work with the delivered materials and with the minimum risk of errors during subsequent processing.)

## Three separated files (requested option)



PDF2 is in the preview resolution (the preview PDF) and is used for visual control how cutting lines fits to graphic. This check can then perform everyone in the approval chain, because PDF can be easily opened. When the final product is made of more parts, please put each part into separate PDF file. Alternatively we can send you sheet assembly and you can put your graphic inside it.

### Recommended workflow:

1. Keep cutting lines in one layer and graphic in second layer.
  2. Place graphic into cutting lines, create overlaps.
  3. Turn off cutting layer and create print PDF1 in high resolution. (see pic. 1)
  4. Turn on both layers and create preview PDF2 in low resolution. (see pic. 2)
  5. If cutting die is not made by us, or you made some changes in it, turn off layer with graphic and create PDF3 only with cutting lines. (see pic. 3).
- CHANGES IN CUTTING LINES MUST ALWAYS BE CONSULTED WITH US.** We can not be responsible for changes that we did not made.
6. When you follow these steps you will get files with the same size and where crop marks fit onto each other.

### What to watch:

For example, you do some change in one file and this change is not reflected in the rest of the files. When you change something it is safest to create all the files again.

- In case of errors, according to the agreement documents are either returned to the client and client must deliver new, corrected data, or if possible we can do the repairs for the standard price of our DTP. In both cases, it may take longer delivery time.
- Please check carefully your outputs that you send to print, you save yours and ours time and money.
- We can not be responsible for errors in files delivered by you and certainly we can not judge "the sense" of graphic proposal.